

## ► For Further Information



The Natural & Built  
Environment Division

### ► The Natural and Built Environment

Babergh District Council  
Corks Lane  
Hadleigh  
Ipswich  
IP7 6SJ

#### Other information leaflets available:

- Carpet, Museum & Fur Beetle Control
- Furniture Beetle (Woodworm) & Wharf Borer Control
- Cockroach Control
- Larder Beetle Control
- Spider Beetle Control
- Housefly Control
- Flea Control
- Biscuit Beetle Control
- Silverfish, Earwig, woodlouse & Slug Control
- Psocid (Booklouse) Control
- Seagull Control
- Pest Control Advice
- Rodent Control
- Feral Pigeon Control

## ► ADVICE TO HOUSEHOLDERS ON LARDER BEETLE CONTROL

### ► Babergh District Council

[www.babergh.gov.uk/babergh/pests](http://www.babergh.gov.uk/babergh/pests)

Updated Sept 2006

E-mail: [pests@babbergh.gov.uk](mailto:pests@babbergh.gov.uk)  
Facsimile: (01473) 825738  
Minicom: (01473) 825878  
Tel: (01473) 822801  
[www.babergh.gov.uk](http://www.babergh.gov.uk)



This document can be made available on audio tape, in Braille, large print or an alternative language upon request by telephoning 01473 822801

# ► Advice to Householders on Larder Beetle Control

## ► CHARACTERISTICS

The forewings of the larder beetle are hard and leathery meeting along the centre of the back. It has biting mouthparts and a well-developed thorax (part of the body between the head and the abdomen). Larder beetles belong to the Dermetidae family, which means skin feeders.

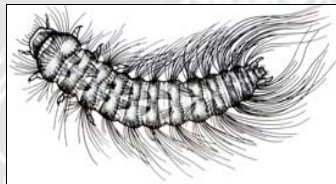
The **bacon beetle** adults are 7 – 9mm long, with an oval shaped body densely covered with round scale like hairs and a broad light band crosses the elytra (forewings) with three black spots on each side.

The **hide beetle** adults are 5.5 – 10mm long, the elytra are brown/black in colour, the body is oval shaped and densely covered with round scale like hairs. The inner apex of each forewing is pronounced backwards into a fine point.

BISCUIT BEETLE ▼



LARVA ▼



HIDE BEETLE ▼



## ► BEHAVIOUR

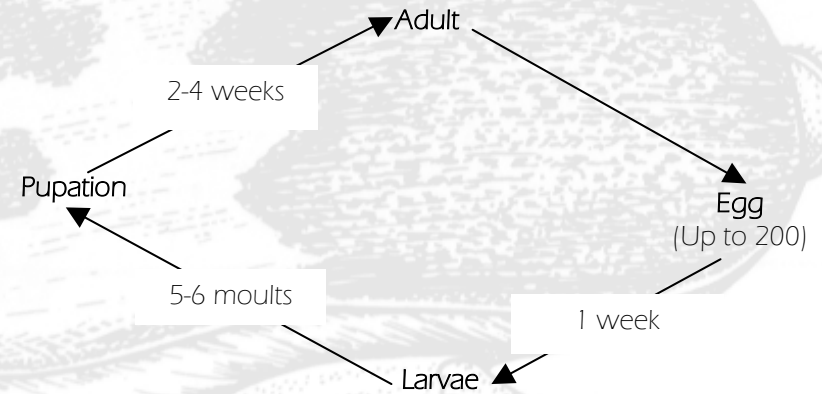
These beetles are common where animal products are handled e.g. hide, skin, bone, dried meat, fishmeal and dog biscuit manufacturing premises. Where infestations occur in domestic premises, they are often encountered in larders and food storage areas, hence their collective name. They can also be found feeding on dead rodents or birds in attics or under floor spaces.

## ► SIGNIFICANCE

These beetles play only a minute role in the transmission of disease, although they may act as carriers of anthrax. They will breed on any animal protein and can be a serious pest in hide warehouses, tanneries, milk processing plants and other premises where animal products are processed.



## ► LIFE CYCLE



## ► CONTROL MEASURES

The first step in control is to trace the source of the infestation. This is usually obvious in commercial premises although it can be more obscure in domestic premises and can often be associated with dead rodents or old birds' nests.

► **HYGIENE MANAGEMENT** All sources of the infestation should be removed and where possible burnt. Routine surveillance, good housekeeping and thorough cleaning are essential factors in controlling any infestation.

► **INSECTICIDAL CONTROL** This can be done with the use of insecticidal spray treatments of surfaces, but it is imperative that any sprays used do have a residual activity.