

Spider Beetle Control

Advice to Householders



Spider Beetle Control

Characteristics

Spider Beetles have long antennae at the front of the head, which are segmented and positioned between the eyes. They have a spider like appearance, a stout body with a hairy surface, a waist like constriction at the base of the thorax, behind the head and six long, thin legs. There are several species of the spider beetle but the two most common ones are the Australian and the Golden ones.

Australian Spider Beetles are between 2.5 and 4mm long and the body is clothed in dull brown to golden brown hairs.

and
yellow



Golden Spider Beetles are 3-4.5mm long their bodies are clothed in silky golden-hairs and fine scales.

◀ Spider Beetle

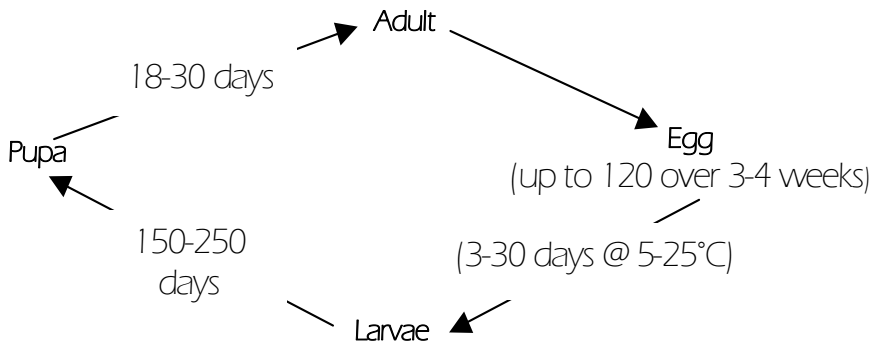
Behaviour

Spider Beetle Control

Significance

Spider beetle larvae will infest all manner of dry animal and vegetable matter including grain, spices, fishmeal, dog biscuits, dried fruit and a wide variety of miscellaneous debris including textiles. The larvae bore holes in which to pupate and in so doing may damage packaging and the commodities themselves. They also contaminate products with excrement and silk webbing.

Life cycle



Control Measures

The adult beetles will also damage products including bags and sacks. The first step in control is to trace the source of the infestation.

This may be in an obscure place such as a chimney, roof space etc. In the majority of cases it may be a dead animal or an old bird's nest.

Wherever possible, every effort should be made to remove and burn the source of the infestation. Routine checking of such spaces and regular cleaning are also important. Where an infestation is large then a thorough spray treatment of the area will be essential. A spray treatment using a chemical with a residual activity is vital.

Other information leaflets available:

- ▶ Carpet, Museum & Fur Beetle Control
- ▶ Furniture Beetle (Woodworm) & Wharf Borer Control
- ▶ Cockroach Control
- ▶ Spider Beetle Control
- ▶ Housefly Control
- ▶ Flea Control
- ▶ Black Ant Control
- ▶ Silverfish, Earwig, woodlouse & Slug Control
- ▶ Psocid (Booklouse) Control
- ▶ Biscuit and Larder Beetle
- ▶ Pest Control Advice

Customer Services

Babergh District Council
Corks Lane, Hadleigh
Ipswich IP7 6SJ
Tel: (01473) 825890
Minicom: 01473 825878 
www.babergh.gov.uk/babergh/pests

If you need help to understand this information in another language or would like it in another format (audio version or large print) please call
01473 826622

